



**TEST REPORT**  
**ON**  
**1.5 GHz FIXED FREQUENCY**  
**SINGLE POLE SINGLE THROW**  
**REFLECTIVE SWITCH MODULE**

**AMC MODEL No:**  
**SWN-2182-1**  
**OPTION 105F**

Serial Number: 1MS712424

**DESIGNED**  
**BY**  
**R. Afable**

**TESTED**  
**BY**  
**C. Wendland**

**REPORTED**  
**BY**  
**E. Elder**

**May 3, 2005**

**AMERICAN MICROWAVE CORPORATION.**, 7311-G Grove Road, Frederick, MD 21704  
Tel: 301-662-4700 • Fax: 301-662-4938 • Email: [sales@americanmicrowavecorp.com](mailto:sales@americanmicrowavecorp.com)  
Website: <http://www.americanmicrowavecorp.com>

**ISO9001 : 2000 CERTIFIED**

## TABLE OF CONTENTS

●	PRODUCT DESCRIPTION AND ELECTRICAL SPECIFICATIONS	PAGE 3
●	PRODUCT FEATURE AND ENVIRONMENTAL SPECIFICATIONS	PAGE 4
●	OUTLINE DRAWING	PAGE 5
●	FUNCTIONAL SCHEMATIC	PAGE 6
●	TEST DATA FOR SWN-2182-1 OPTION 105F SERIAL NUMBER 1MS712424	PAGE 7

## SINGLE POLE SINGLE THROW REFLECTIVE SWITCH MODULE AMC MODEL No: SWN-2182-1 OPTION 105F

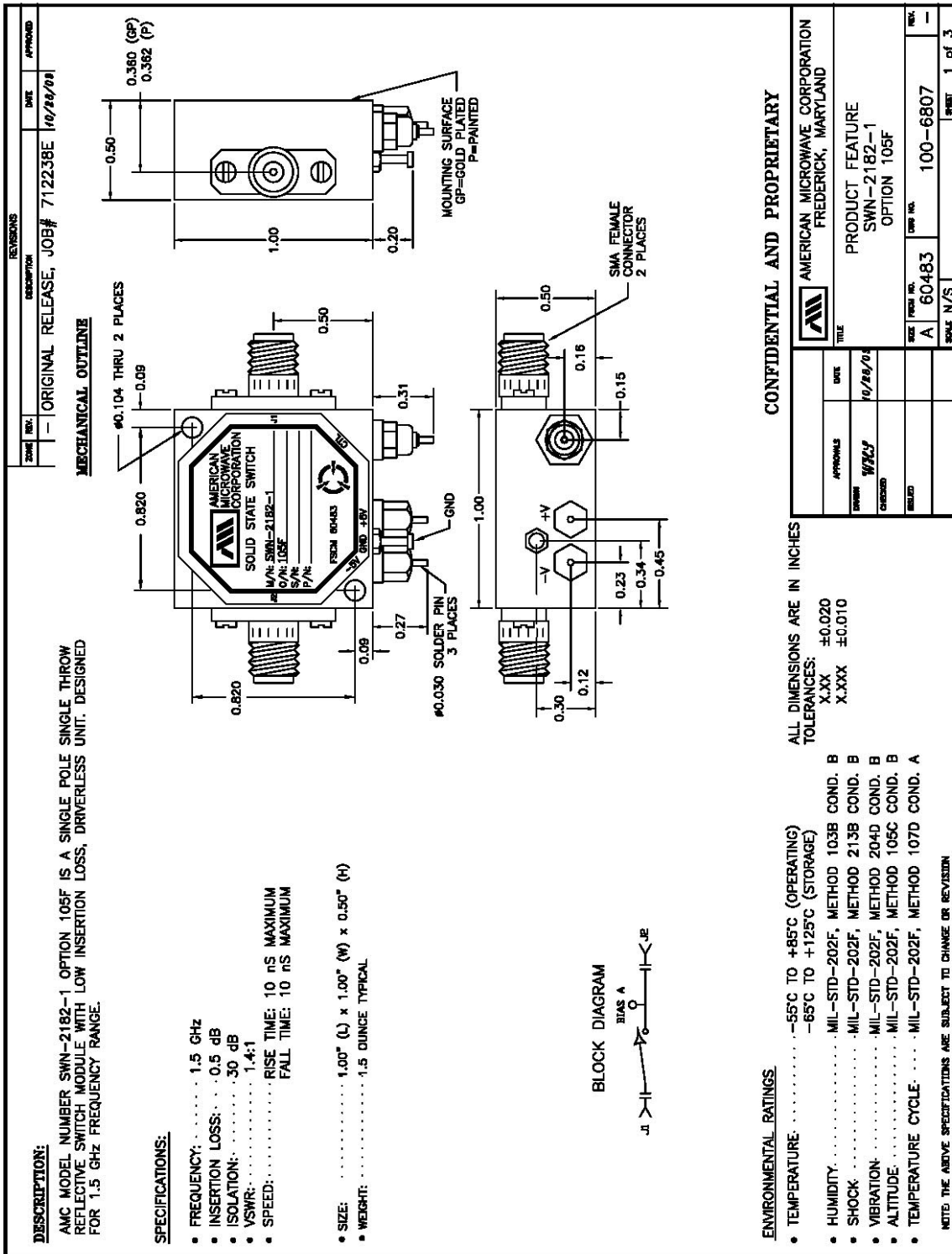
### FEATURES:

- **1.5 GHz FIXED FREQUENCY**
- **LOW INSERTION LOSS**
- **DRIVERLESS UNIT**

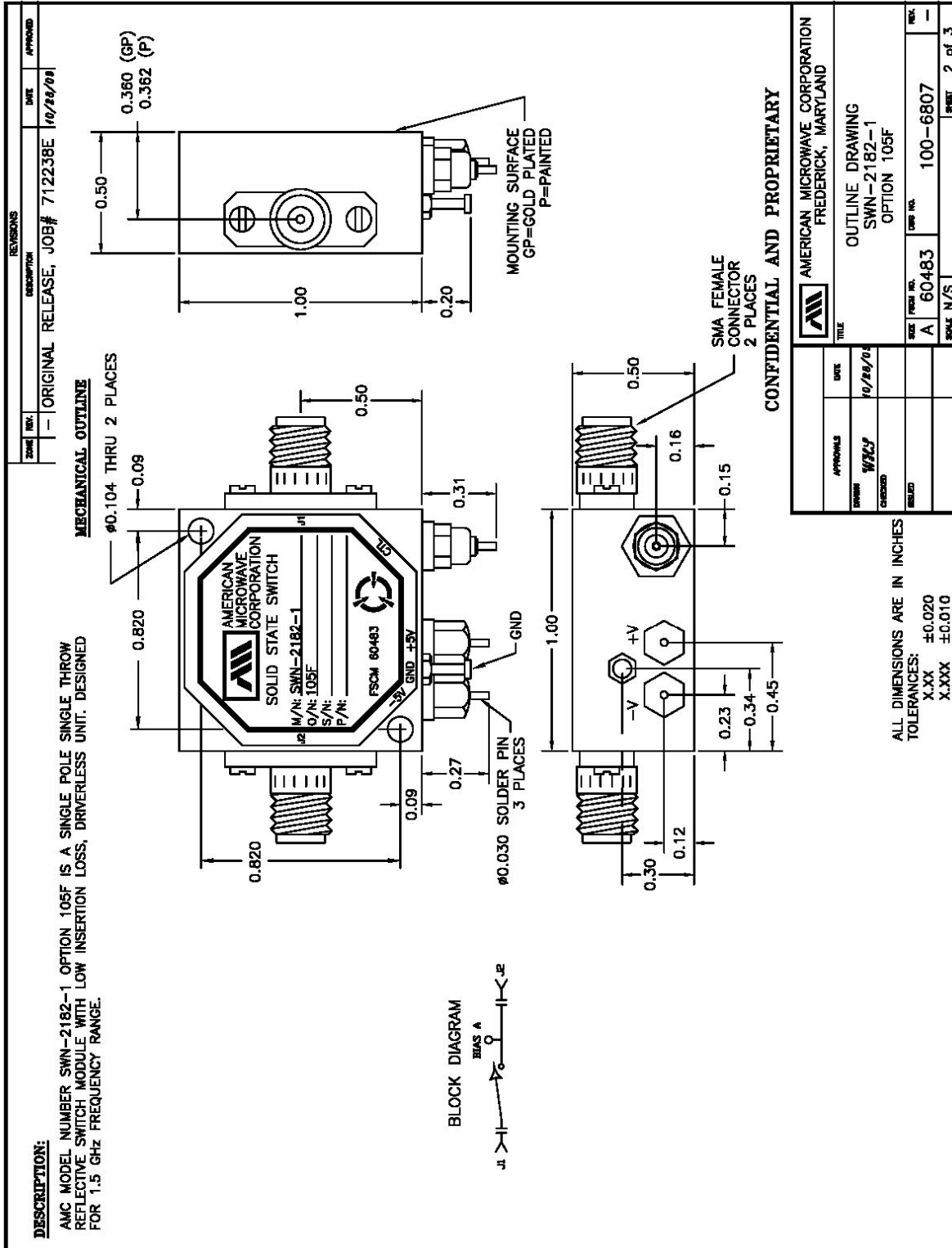
### SPECIFICATIONS:

- FREQUENCY : 1.5 GHz
- INSERTION LOSS : 0.5 dB
- ISOLATION : 30 dB
- VSWR : 1.4:1
- SPEED : RISE: 10 ns MAXIMUM  
: FALL: 10 ns MAXIMUM
- SIZE : 1.00" (L) x 1.00" (W) x 0.50" (H)
- WEIGHT : 1.5 OUNCES TYPICAL

## PRODUCT FEATURE



**OUTLINE DRAWING**



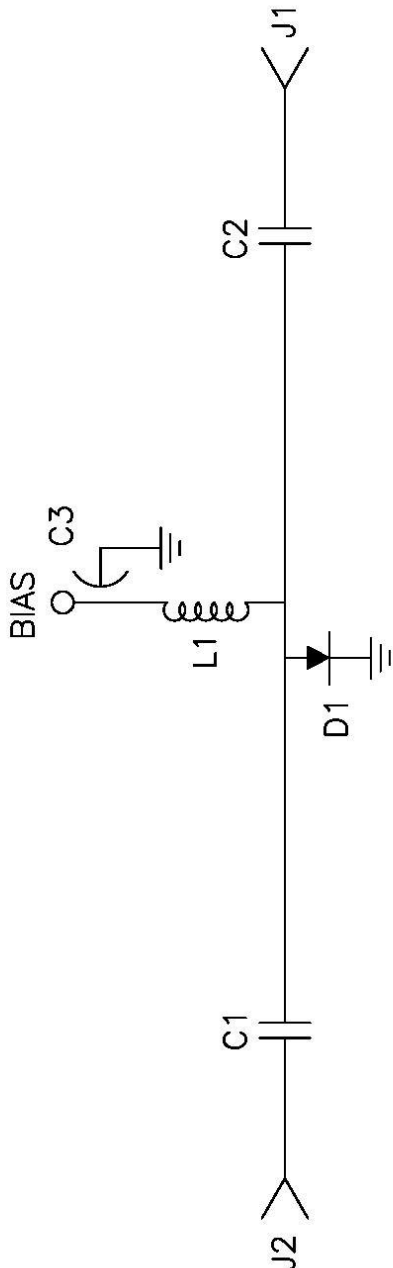
**FUNCTIONAL SCHEMATIC**

REVISIONS		DATE	APPROVAL
NO.	DESCRIPTION		
1	ORIGINAL RELEASE, JOB # 712238E	10/29/04	

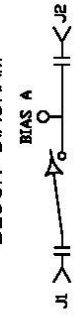
  

**DESCRIPTION:**  
 AMC MODEL NUMBER SWN-2182-1 OPTION 105F IS A SINGLE POLE SINGLE THROW REFLECTIVE SWITCH MODULE WITH LOW INSERTION LOSS, DRIVERLESS UNIT. DESIGNED FOR 1.5 GHz FREQUENCY RANGE.

FUNCTIONAL SCHEMATIC

**BLOCK DIAGRAM**

**CONFIDENTIAL AND PROPRIETARY**

APPROVALS	DATE	TITLE
SWN	10/29/04	AMERICAN MICROWAVE CORPORATION FREDERICK, MARYLAND
CHKD		FUNCTIONAL SCHEMATIC
BLD		SWN-2182-1 OPTION 105F
SIZE	FORM NO.	DRW. NO.
A	60483	100-6807
SCALE N/S		SHEET 3 of 3

**FINAL TEST DATA**

AMC MODEL NO: SWN-2182-1 OPTION 105F, SERIAL NUMBER: 1MS712424

FORM: SW-01/0791



DATE: 1/2/98

**MICROWAVE SWITCH FINAL TEST DATA**

JOB NO: 710238E MODEL NO: SWN-2182-1 SERIAL NO: 1ms712424  
 CUSTOMER: APG Electronics TECHNICIAN: CAW  
 SPECIFICATION: MTC-STD 454 FREQUENCY RANGE: 1.5GHz (CW)

INSERTION LOSS	VSWR		
	INPUT	OUTPUT ON	OUTPUT OFF
<u>-0.24 dB</u>	<u>-20.07dB</u>	<u>-22.41dB</u>	<u>—</u>

I: + 55mA  
→ < 5mA

ISOLATION	SWITCHING SPEED			
	DELAY ON	RISE TIME	DELAY OFF	FALL TIME
<u>&lt; -30dB</u>		<u>210ns</u>		<u>210ns</u>

NOTE: Any additional Test Data on Back

Test: CAW  
 QA/QC: \_\_\_\_\_  
 Date: \_\_\_\_\_